

LOADING THE LABELS:

STEP 1

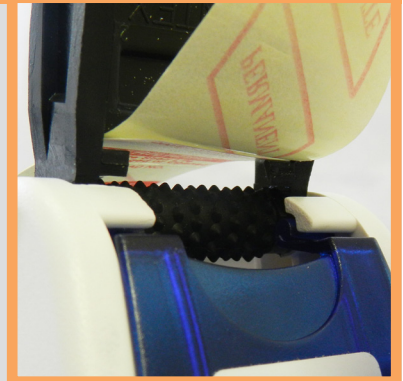
- Raise the top cover and open the base plate.
- Insert the end of the label roll inside the dispenser. (labels should be facing up)
- Insert the roll into the axis of the label roll holder and close the cover.

NOTE: Remove 6-7 labels to make loading easier.



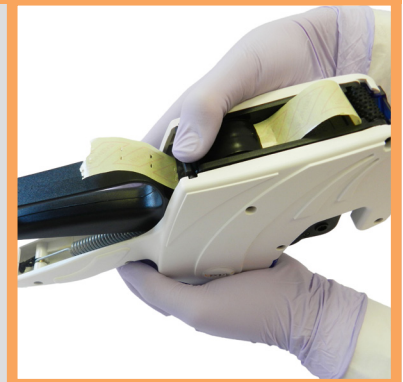
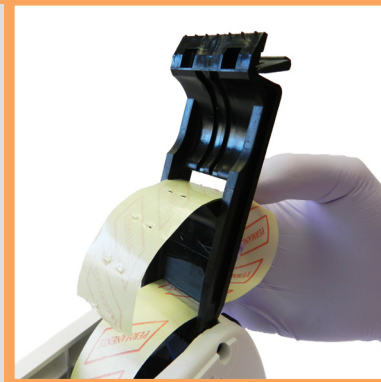
STEP 2

- Turn the dispenser upside down.
- Pull the labels through the first slot of the base plate, near the applicator roller. (see picture at far right for more details)
- Pull about 9 cm of label roll ribbon through the slot.



STEP 3

- Insert the label roll ribbon through the second slot of the base plate.
- Close the base plate – it will “click”.



STEP 4

- Begin to make the labels advance.
- After five or six dispenses, the labels should dispense smoothly.
- Enjoy your new label dispenser!



SEE REVERSE SIDE FOR REPLACING INK ROLL & FOR SETTING PRINTHEAD >>

REPLACING INK ROLL & ADJUSTING PRINTHEAD

Changing The Ink Roller

- Open front cover by pulling out the lower portion of the cover with your hand.
- Once opened, the ink roller holder will appear.
- Release the ink roller by pushing lightly on its lateral plastic ends.
- Hook a new ink roller into place.

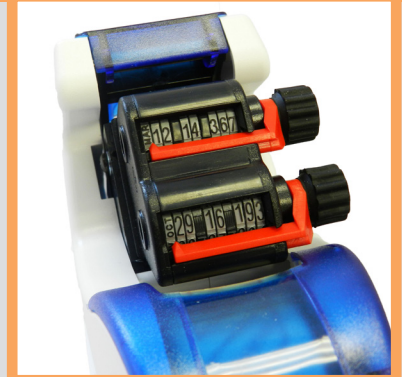


NOTE: Use gloves to avoid ink stains on hands.

Setting Printing Information

To change the printing data (ie: sterilizer, load number, date):

- Slide the dialing knobs out and turn backward or forward.
- The bottom or top line can both be set to 'not print'. Turn the knobs to a blank space – no data will print there.
- Once printing data is set to your preference, slide knobs back in.



Adjust Print Location on Label

- Using a screwdriver, loosen the screw on the guide plate on both sides.
- Move the printhead forwards or backwards to set print location higher or lower on the label.
- Tighten screws on both sides.
- Test print and adjust as needed.



CONTACT YOUR LABELLEX DEALER FOR FURTHER ASSISTANCE!

Limited Lifetime Warranty

Labellex honours a lifetime warranty under normal use conditions. If you find a material or manufacturing defect with the dispenser, please notify the company where you purchased the dispenser system. Labellex will repair or replace the dispenser entirely free of charge provided the damage has not been caused by misuse, negligence, accident, or abuse.